




Price per guest and per night

with ERMITAGE gourmet board,
wellness oasis and guest programme

	Spring and Autumn 21.03.-09.07.2021				Summer 09.07.-05.09.2021			
	05.09.-19.12.2021	05.09.-19.12.2021	05.09.-19.12.2021	05.09.-19.12.2021	09.07.-05.09.2021	09.07.-05.09.2021	09.07.-05.09.2021	09.07.-05.09.2021
"Rellerli"	180.-	190.-	215.-	240.-	195.-	205.-	230.-	257.-
"Ried"	220.-	230.-	255.-	280.-	255.-	270.-	295.-	322.-
"Gstaad"	250.-	265.-	290.-	315.-	280.-	295.-	320.-	347.-
"Saane"	282.-	297.-	322.-	352.-	312.-	327.-	352.-	382.-
"Eggli"	320.-	335.-	360.-	385.-	345.-	365.-	390.-	417.-
"Wellness"	340.-	360.-	385.-	410.-	370.-	390.-	415.-	442.-
"Family"	262.-	277.-	302.-	327.-	297.-	312.-	337.-	362.-
"Hugeli"	195.-	205.-	230.-	255.-	205.-	215.-	240.-	292.-
"Horn"	250.-	265.-	290.-	315.-	280.-	295.-	320.-	347.-
	Winter 03.01.-21.03.2021 20% surcharge from 05.02. to 07.03.21 10% surcharge from 03.01. to 10.01.21				Christmas (4 nights) 22.12.- 26.12.2021	(7 nights) 19.12.- 26.12.2021	New Years (7 nights between) 26.12.2021-03.01.2022	
"Rellerli"	220.-	230.-	255.-	280.-	1'080.-	1'746.-	2'696.-	
"Ried"	280.-	295.-	320.-	345.-	1'368.-	2'222.-	3'571.-	
"Gstaad"	315.-	330.-	355.-	380.-	1'520.-	2'474.-	4'397.-	
"Saane"	342.-	362.-	387.-	417.-	1'652.-	2'698.-	5'846.-	
"Eggli"	390.-	410.-	435.-	460.-	1'872.-	3'062.-	6'196.-	
"Wellness"	410.-	430.-	455.-	480.-	1'960.-	3'209.-	6'406.-	
"Family"	327.-	342.-	367.-	392.-	1'564.-	2'551.-	4'306.-	
"Hugeli"	230.-	240.-	265.-	290.-	1'124.-	1'816.-	2'801.-	
"Horn"	305.-	320.-	345.-	370.-	1'476.-	2'404.-	3'676.-	

 from 6 nights

 from 3 nights

 Short break (1 or 2 nights)
from Sunday to Thursday night

 Weekend (1 or 2 nights)
Friday and Saturday night

All prices are shown in Swiss francs, excluding visitor's tax (adults CHF 5.60 per day, children from 12 years CHF 2.80 per day) and accommodation tax (CHF 1.- per day). The valid daily exchange rate is applied to all billing or payment in euros. All our rooms are non-smoking rooms. Room numbers and floors cannot be confirmed. Prices are subject to change.

ERMITAGE gourmet board: Sustainable ERMITAGE breakfast, soup and salad for lunch, afternoon-cake session and dinner with options to choose.

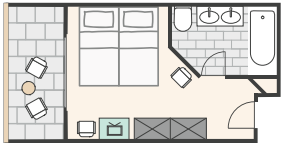
Discount: Room only with breakfast: CHF 20.- per night. Twin room for single use: + 50%. Extra bed adults depending on room category: + 50-80%. Children up to 16 years free including breakfast with two full-paying adults, except suites and Christmas / New Year's bookings. Half board for children: CHF 35.-. Pets: CHF 25.- per night, not including food.

ROOMS AND SUITES

live like at home.

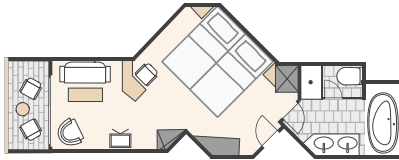
“Rellerli”

Small twin with balcony facing the street side, bath or shower, free Wi-Fi



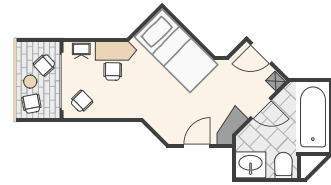
“Ried”

Twin with balcony facing the park, bath or shower, double sink, free Wi-Fi



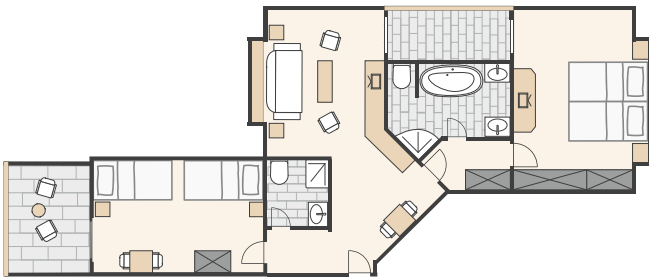
“Horn”

Single room with balcony facing the park, bath, free Wi-Fi



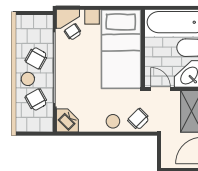
“Family”

Suite on the top floor with a balcony facing east, separate living room and bedroom, children's bedrooms (2), 2 bathrooms, free Wi-Fi, (at least 3 persons)



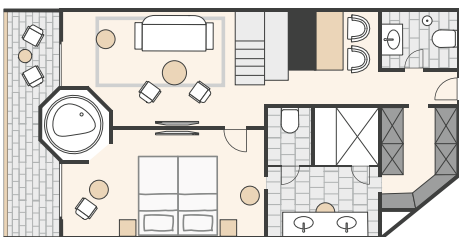
“Hugeli”

Single room with balcony facing the street, bath or shower, free Wi-Fi



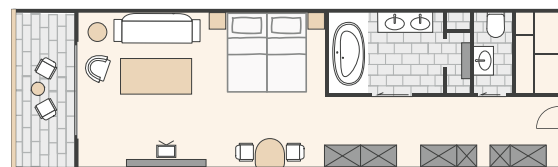
“Wellness”

Twin suite on the top floor with a balcony, separate living room and bedroom facing the park, panoramic round jacuzzi tub, steam sauna with shower, 2 separate WC, bidet, free Wi-Fi



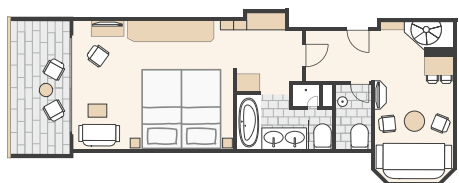
“Saane”

Twin Senior suite with balcony facing the park, large living room, fireplace, dressing room, bath, separate WC, jacuzzi tub, steam sauna with shower, double sink, free Wi-Fi



“Eggli”

Twin suite with balcony, bedroom facing the park, separate, beautiful sitting room with bay window, bath, separate shower, separate WC, jacuzzi tub, double sink, free Wi-Fi



“Gstaad”

Twin Junior Suite with balcony facing the park, living room, bath, separate shower, separate WC, double sink, free Wi-Fi

