







with ERMITAGE gourmet board,
wellness oasis and guest programme

Prices per guest and night	Spring and Autumn 20.03.–08.07.2022				Summer 08.07.–04.09.2022			
	04.09.–23.12.2022							
“Rellerli”	190.–	200.–	230.–	255.–	205.–	215.–	240.–	270.–
“Ried”	230.–	240.–	270.–	295.–	265.–	280.–	305.–	335.–
“Gstaad”	260.–	275.–	300.–	330.–	290.–	305.–	330.–	360.–
“Saane”	295.–	310.–	335.–	365.–	325.–	340.–	365.–	400.–
“Eggli”	330.–	345.–	375.–	400.–	360.–	380.–	405.–	435.–
“Wellness”	350.–	370.–	400.–	425.–	385.–	405.–	430.–	460.–
“Hugeli”	205.–	215.–	245.–	270.–	215.–	225.–	250.–	305.–
“Horn”	260.–	275.–	300.–	330.–	290.–	305.–	330.–	360.–

Price per suite and night (flat rate)*

“Hornberg family suite”	900.–	950.–	1060.–	1170.–	990.–	1040.–	1140.–	1260.–
“Horneggli family suite with kitchen”	1190.–	1240.–	1360.–	1460.–	1280.–	1340.–	1440.–	1560.–

Prices per guest and night	Winter 09.01.–20.03.2022 20% surcharge from 04.02. to 27.02.22 10% surcharge from 02.01. to 09.01.22			
“Rellerli”	230.–	240.–	265.–	290.–
“Ried”	290.–	305.–	330.–	355.–
“Gstaad”	325.–	340.–	365.–	390.–
“Saane”	355.–	375.–	400.–	430.–
“Eggli”	405.–	425.–	450.–	475.–
“Wellness”	425.–	445.–	470.–	495.–
“Hugeli”	240.–	250.–	275.–	300.–
“Horn”	315.–	330.–	355.–	380.–

-  from 6 nights
-  from 3 nights
-  Short break (1 or 2 nights)
from Sunday to Thursday night
-  Weekend (1 or 2 nights)
Friday and Saturday night

Price per suite and night (flat rate)*

“Hornberg family suite”	1110.–	1160.–	1260.–	1360.–
“Horneggli family suite with kitchen”	1420.–	1480.–	1580.–	1680.–

A minimum number of nights may apply on certain dates.

All prices are shown in Swiss francs, excluding visitor's tax (adults CHF 5.60 per day, children from 12 years CHF 2.80 per day) and accommodation tax (CHF 1.– per day). The valid daily exchange rate is applied to all billing or payment in euros. All our rooms are non-smoking rooms. Room numbers and floors cannot be confirmed. Prices are subject to change.

ERMITAGE gourmet board: Sustainable ERMITAGE breakfast, soup and salad for lunch, afternoon-cake session and dinner with options to choose.

Discount: Room only with breakfast: CHF 20.– per night. Twin room for single use: + 50%. Extra bed adults depending on room category: + 50–80%. Children up to 16 years free including breakfast with two full-paying adults, except suites and Christmas / New Year's bookings. Half board for children: CHF 35.–. Pets: CHF 25.– per night, not including food.

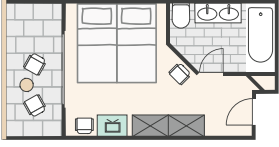
*For 4 persons, no price reduction for fewer persons or children.

ROOMS AND SUITES

live like at home.

“Rellerli”

Small twin with balcony facing the street side, bath or shower, free Wi-Fi



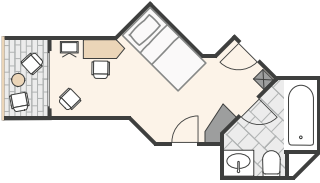
“Ried”

Twin with balcony facing the park, bath or shower, double sink, free Wi-Fi



“Horn”

Single room with balcony facing the park, bath, free Wi-Fi



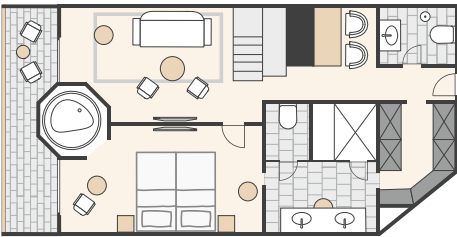
“Hugeli”

Single room with balcony facing the street, bath or shower, free Wi-Fi



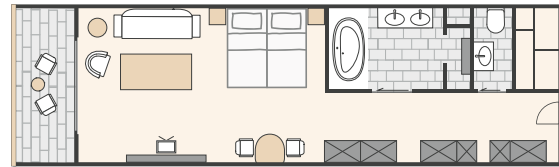
“Wellness”

Twin suite on the top floor with a balcony, separate living room and bedroom facing the park, panoramic round jacuzzi tub, steam sauna with shower, 2 separate WC, bidet, free Wi-Fi



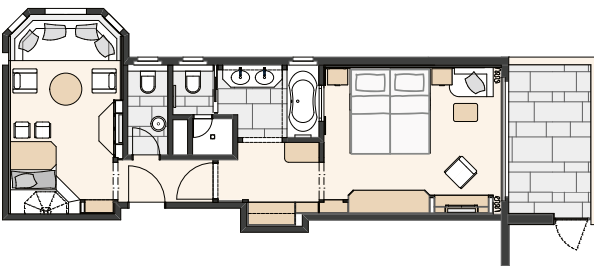
“Saane”

Twin Senior suite with balcony facing the park, large living room, fireplace, dressing room, bath, separate WC, jacuzzi tub, steam sauna with shower, double sink, free Wi-Fi



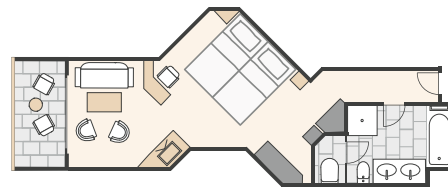
“Eggli”

Twin suite with balcony, bedroom facing the park, separate, beautiful sitting room with bay window, bath, separate shower, separate WC, jacuzzi tub, double sink, free Wi-Fi



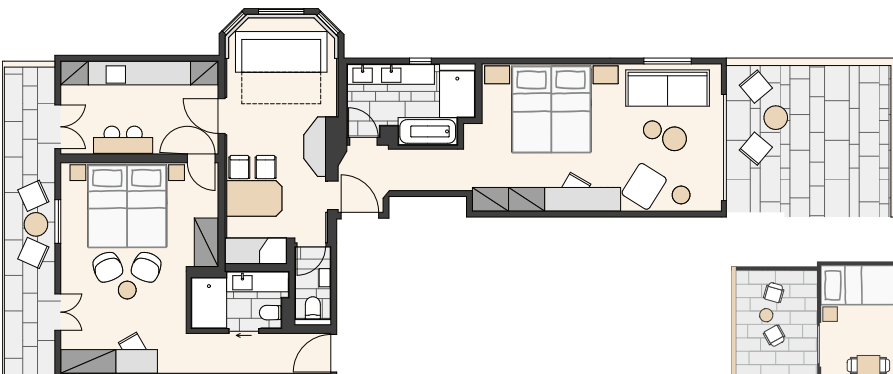
“Gstaad”

Twin Junior Suite with balcony facing the park, living room, bath, separate shower, separate WC, double sink, free Wi-Fi



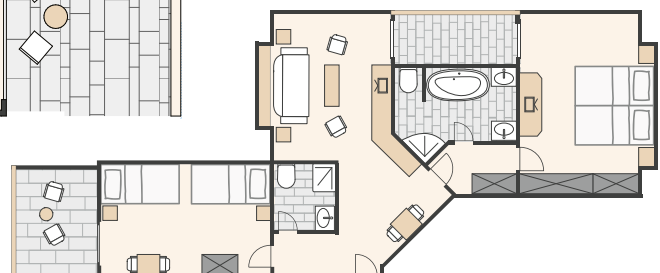
“Horneggli family suite with kitchen”

Four-bed suite with balcony, fully equipped kitchen, bedrooms facing the park and street, living room with bay window, 2 bathrooms, 2 showers, 1 bath, separate WC, free Wi-Fi



“Hornberg family suite”

Penthouse suite with balcony facing the town, separate living and sleeping areas, 2 children's rooms, 2 bathrooms, free Wi-Fi



Depending on the room, the floor plan may vary. This is neither to scale nor binding.